



Lowndes Street, SW1X
£2,950,000, Leasehold

Anderson//Rose



Lowndes Street, SW1X

An opportunity to acquire a beautifully presented and well-proportioned lateral apartment situated on the ninth floor as a secure and private development in the centre of Knightsbridge.

The property benefits from abundance of natural daylight and has been finished to an impressive standard throughout. Comprising of a very large reception and dining room, a large and completely separate modern eat-in kitchen, the principal bedroom suite with plenty of wardrobes, a second very large bedroom again with an en-suite bathroom and a guest cloakroom. The flat further benefits from the building's passenger lift and porter services.

Chelsea House is situated at the top of Lowndes Street where it joins on Lowndes Square. Knightsbridge, Belgravia & Sloane Squares high-streets and world-famous amenities are literally at your front door. With his majesties open green spaces and boating lakes of Hyde Park also just up the road. The nearest tube is Knightsbridge (Zone 1 Piccadilly Line) which provides an efficient commute across London.

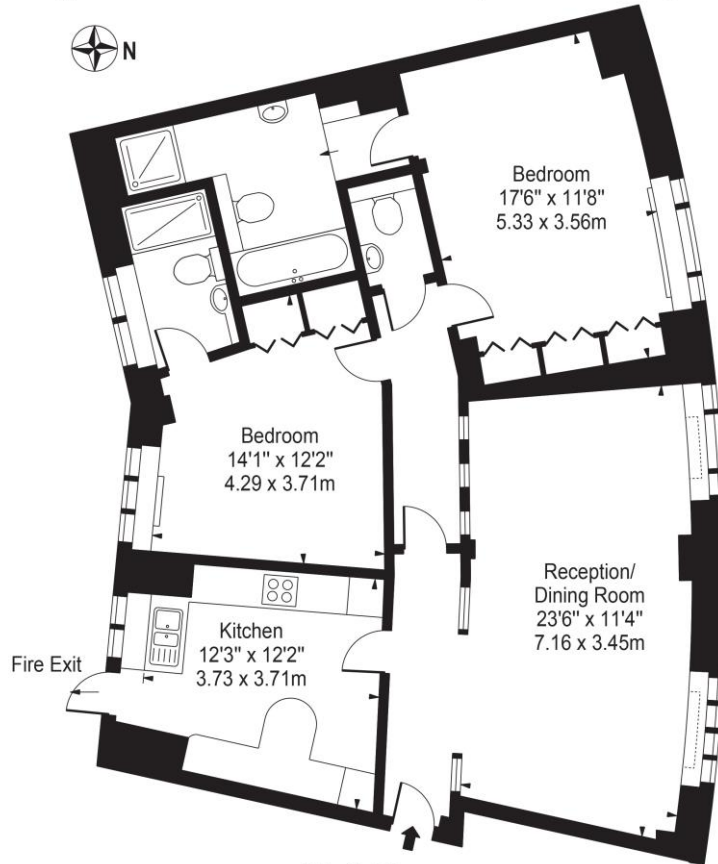
Ref PCL230162

£2,950,000
Leasehold



Chelsea House

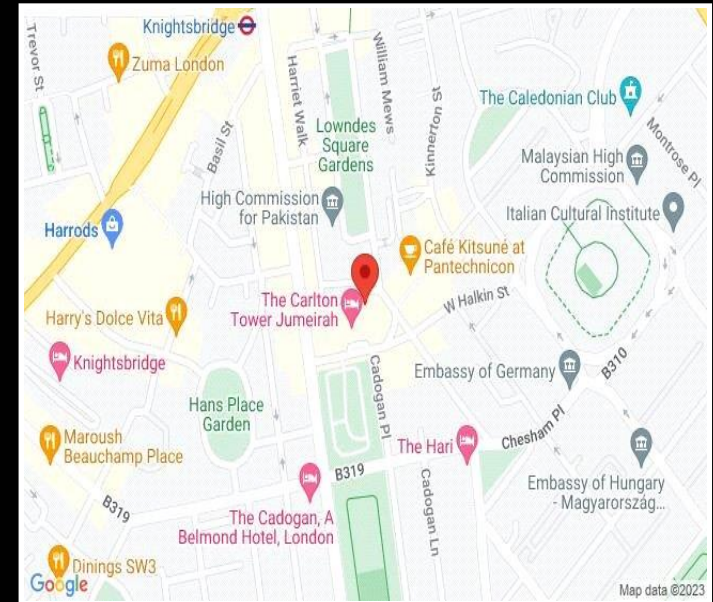
Approx. Gross Internal Area 1098 Sq Ft - 102.01 Sq M



Ninth Floor

For Illustration Purposes Only - Not To Scale

This floor plan should be used as a general outline for guidance only and does not constitute in whole or in part an offer or contract. Any intending purchaser or lessee should satisfy themselves by inspection, searches, enquiries and full survey as to the correctness of each statement. Any areas, measurements or distances quoted are approximate and should not be used to value a property or be the basis of any sale or let.



Energy Efficiency Rating		
	Current	Potential
Very energy efficient - lower running costs		
(92+) A		
(81-91) B		
(69-80) C		
(55-68) D		
(39-54) E	40	53
(21-38) F		
(1-20) G		
Not energy efficient - higher running costs		
England, Scotland & Wales	EU Directive 2002/91/EC	

For clarification, we wish to inform prospective purchasers that we have prepared these sales particulars as a general guide. We have not carried out a detailed survey, nor tested the services, appliances and specific fittings. Room sizes are approximate and rounded: they are taken between internal wall surfaces and therefore include cupboards/shelves, etc. Accordingly, they should not be relied upon for carpets and furnishings. Formal notice is also given that all fixtures and fittings, carpeting, curtains/blinds and kitchen equipment, whether fitted or not, are deemed removable by the vendor unless specifically itemised within these particulars.